



Public Health
England

Public Health England 'Working towards a sustainable healthy future'

Steve Owens

Head of Sustainable Development and Environmental Management
Public Health England



Introduction

- Background
- PHE's national agenda and internal work
- Built environment and health and wellbeing
- Useful tools and advice
- Public Health and Climate Change





Background



Climate Change, Sustainability and Public Health

The health and wellbeing of the public, now and in the future, depends on us living within acceptable limits and developing all sustainable assets – environmentally, economically and socially.

Achieving our goals in sustainable and low carbon ways is critical to turning the biggest strategic health threat we face into the greatest opportunity for collective action and health improvement.

It is anticipated that the health impacts, due to increased climate change, are to be increasingly significant in the future.

Our future physical and mental health, as individuals and as communities, depends on embedding mitigation, adaptation, and the principles of sustainable development into all that we do.



PHE's national approach

Some examples of the SD work PHE are undertaking nationally:

- The Sustainability Transformation Partnerships (STPs)
- Sustainable Development Goals
- Recruitment of Sustainability and Health Ambassadors
- Reduction of Single Use Plastics from our estate
- Sustainable Procurement (Social Value and Slavery Act)



PHE's internal work

Some examples of the work PHE are undertaking internally:

- Continue to meet the Government's Greening Commitment targets; we have made a 12.5% reduction on last years carbon emissions
- We produce advice and training for all of our staff. Blogs/e-learning
- We also produce an annual sustainability report which is available on the .GOV website.
- We utilise our SDMP and various Environmental policies
- Various sustainability working groups
- Close relationship with the Sustainable Development Unit.



Built Environment and health and wellbeing

Our Healthy Places team has recently published two guides for local authorities to support the planning and designing of healthier places and a guide to help public health teams identify when and how to contribute to environmental impact assessments.

- **Spatial Planning for Health**
- **Health and Environmental Impact Assessment note**



Useful tools

At PHE we utilise a number of useful tools to help us evaluate our impact on the environment, reporting to central government, procurement of equipment to name a few, e.g.

- **Carbon Calculating Tool**
- **Environmental Impact assessment tool**

There are also a number of helpful tools and advice on PHE's and the SDU website's e.g.

- **Hot and Cold weather plans**
- **Sustainable Development Assessment Tool**
- **Health Opportunities Transport Tool**



Sustainable Development

- **Reduce** the harmful impacts of how we live
- **Enable** a transformation in the environment, society, health and wellbeing



Source: Sustainable Development Unit (2014)



Direct and indirect health effects



Climate change UK health impacts

Temperature effects - Heat related deaths in the UK are expected to rise steeply during the 21st century with older people most vulnerable (this could be amplified by an ageing population)



Aeroallergens and air pollution - climate change may expose us to allergens like pollen for longer periods of the year and increase levels of ground level ozone



Flooding - more rainfall in winter and higher sea levels will lead to more flooding. Health impacts range from short term (drowning) to long term (mental health impact for people affected)



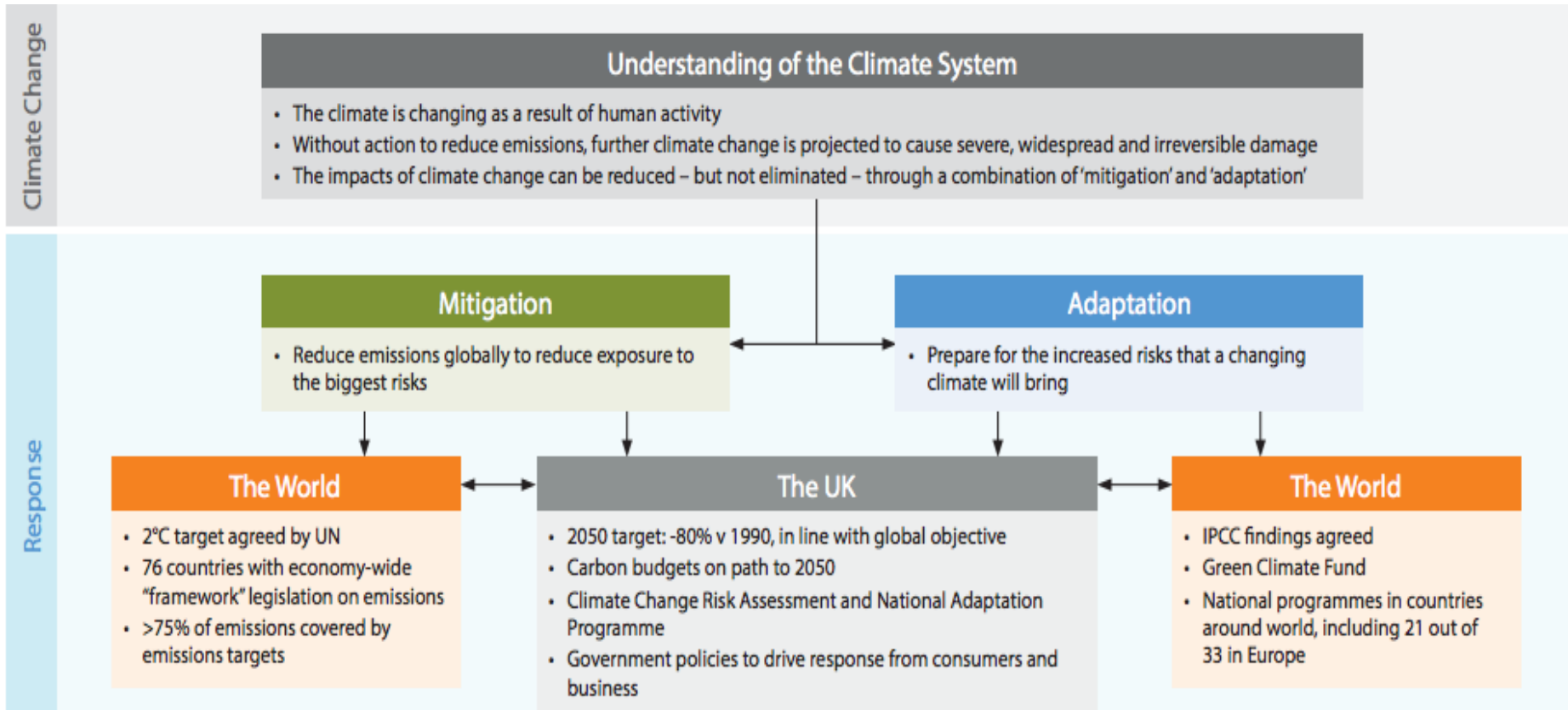
Disease carried by vectors (insects & arachnids) - during the 21st century it's likely that tick & mosquito numbers will increase with the possible introduction of species carrying new diseases



- Impact on health services – demand, business continuity, supply chains
- Impact on infrastructure (utilities)
- Economic impacts
- Community resilience/cohesion



Global problem requiring multiple responses



Source: Committee on Climate Change (2015a)

