

OCDO

OFFICE OF CHIEF
DENTAL OFFICER
ENGLAND



Sustainable dentistry from an NHS England perspective

Eric Rooney
Deputy Chief Dental
Officer



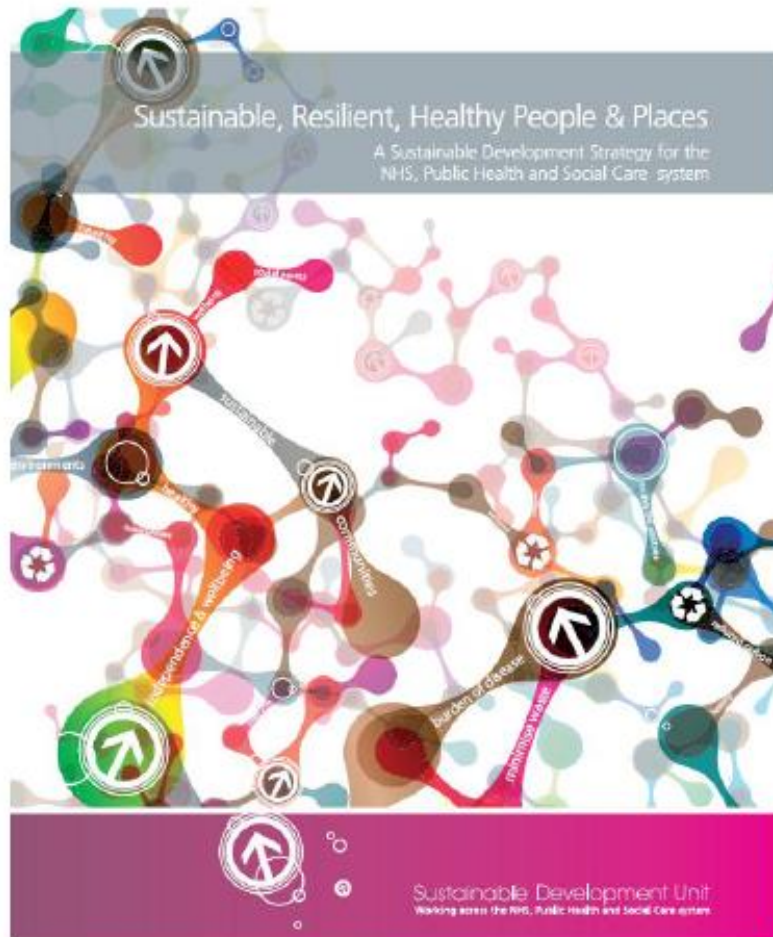
Aims

- To set out the overall approach to sustainability
- To look at the innovations and current developments through a sustainability lens

Health and Social Care Policy



Sustainable dentistry – innovation and future proofing



VISION

A sustainable health and care system works within the available environmental and social resources protecting and improving health now and for future generations.

This means working to reduce carbon emissions, minimising waste & pollution, making the best use of scarce resources, building resilience to a changing climate and nurturing community strengths and assets.

GOALS

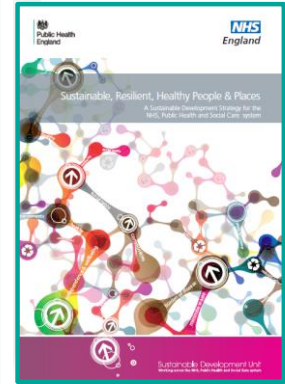
Localities and Health and Wellbeing Boards

Organisations

GOAL 1: A healthier environment

GOAL 2: Communities and services are ready and resilient for changing times and climates

GOAL 3: Every opportunity contributes to healthy lives, healthy communities and healthy environments



Health and Social Care England Carbon Footprint

CO₂e baseline from 1990 to 2025 with Climate Change targets

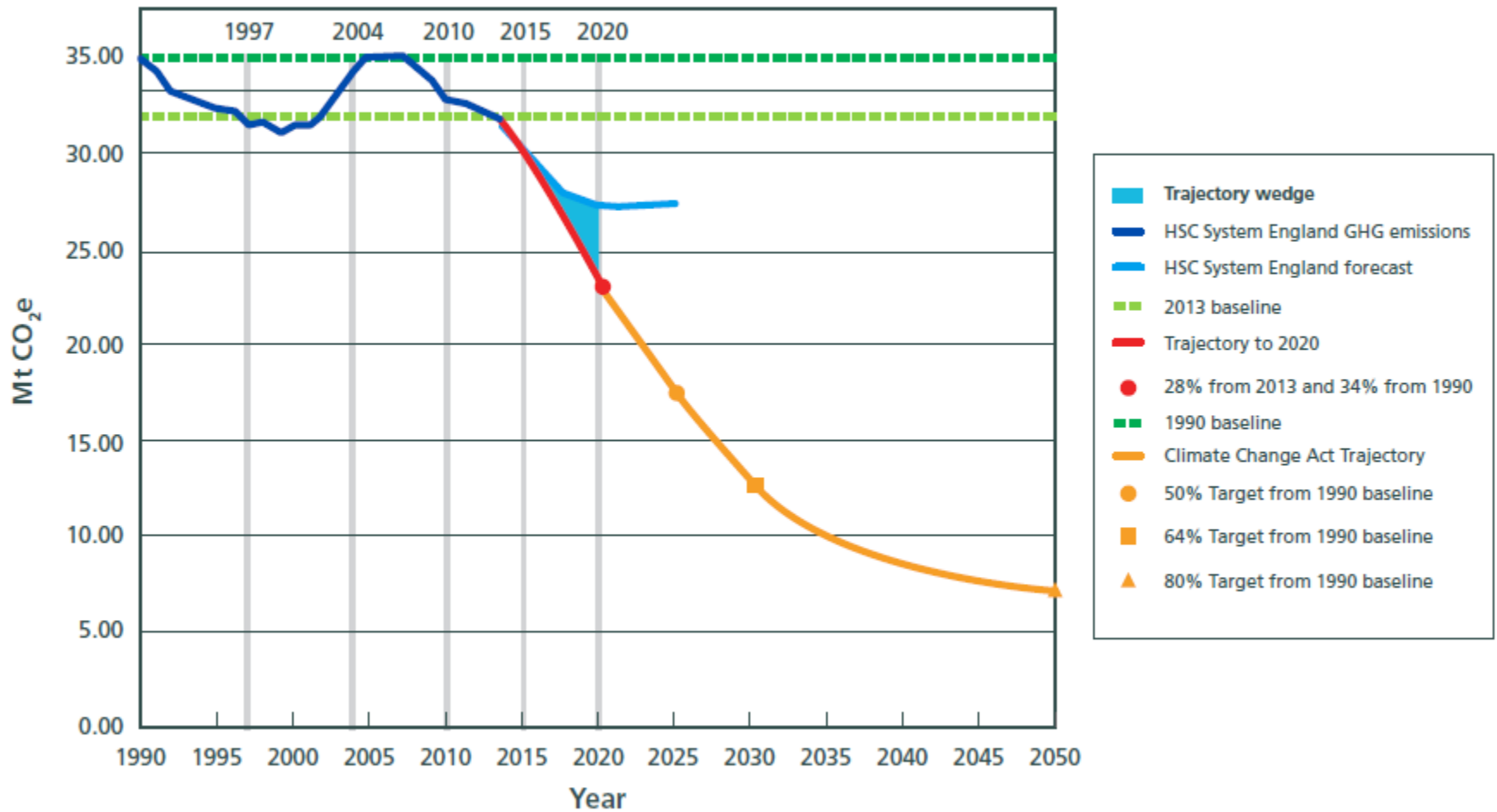
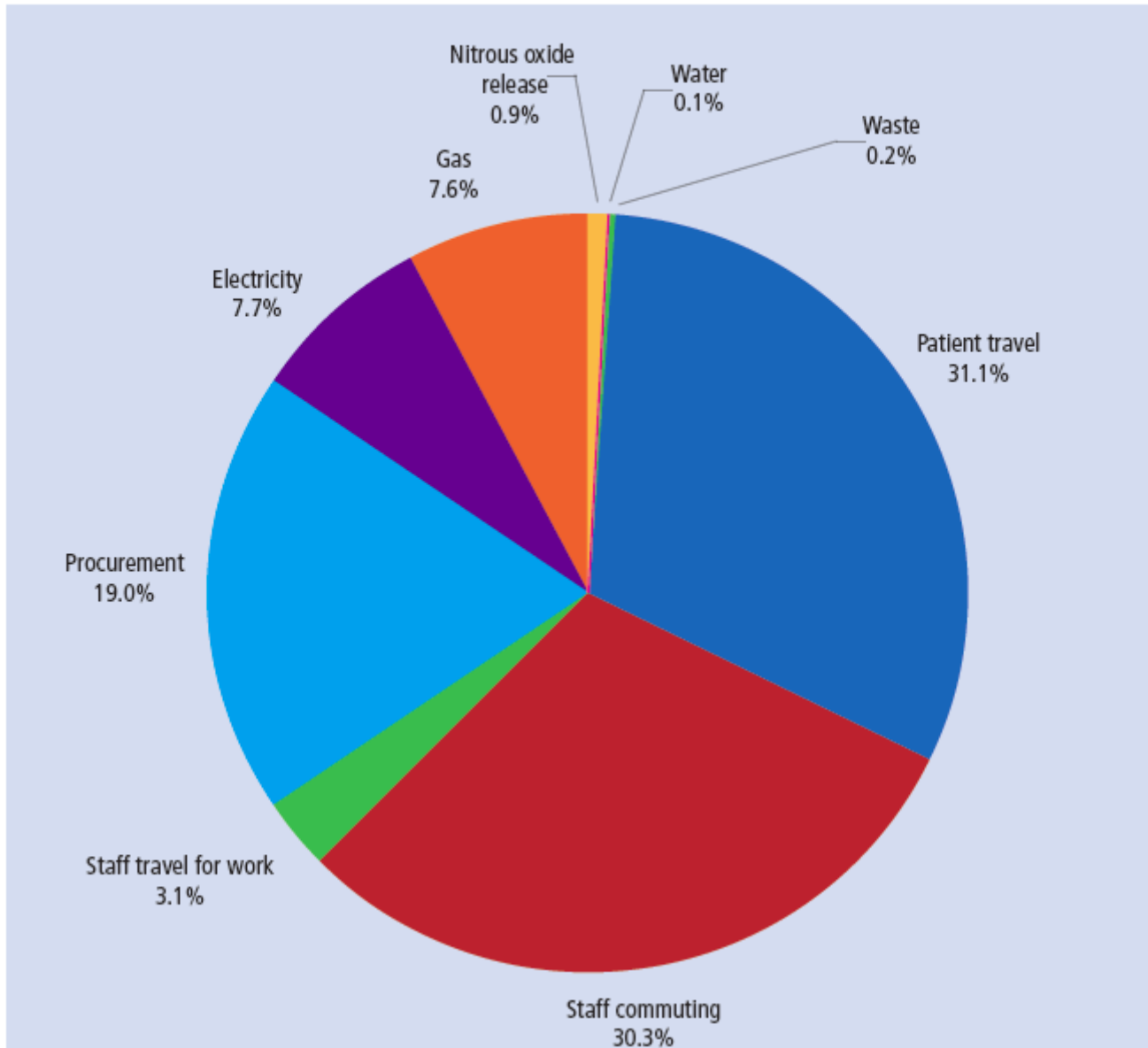


Fig. 1 Total annual carbon footprint of dental services in England – 2013/14



- **Principles**

- Dentistry must be practised ethically, with high levels of quality and safety, in the pursuit of optimal oral health. Sustainability integrates a broader commitment of the oral health professional to social and environmental responsibility. The right of future generations to a world with adequate natural resources must be respected

ELIZABETH II

c. 3



Public Services (Social Value) Act 2012

2012 CHAPTER 3

An Act to require public authorities to have regard to economic, social and environmental well-being in connection with public services contracts; and for connected purposes.
[8th March 2012]

FDI Policy Statement – Sustainability in Dentistry



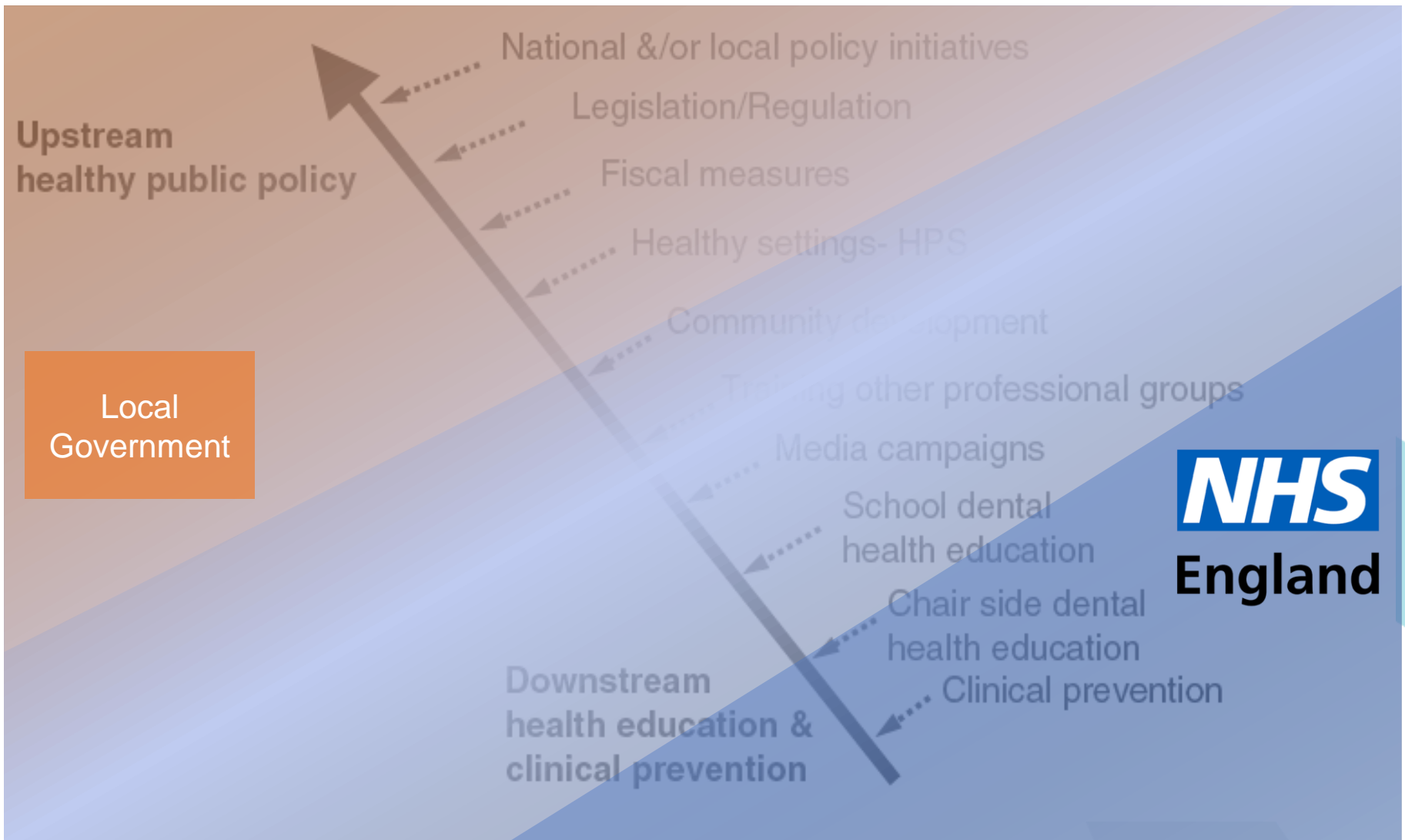
- **Policy**

- The prevention of oral diseases and the promotion of health should be recognized as the most sustainable way to ensure optimal, accessible and affordable oral health with minimal impact on the environment.
- The dentist as leader of the dental team should take steps to educate all of the dental team on sustainability practices and simultaneously reinforce that the safety of the patient and the quality of care provided should always be the team's primary concern.



Improving England's Oral Health

Commissioning responsibilities



Prevention and Care

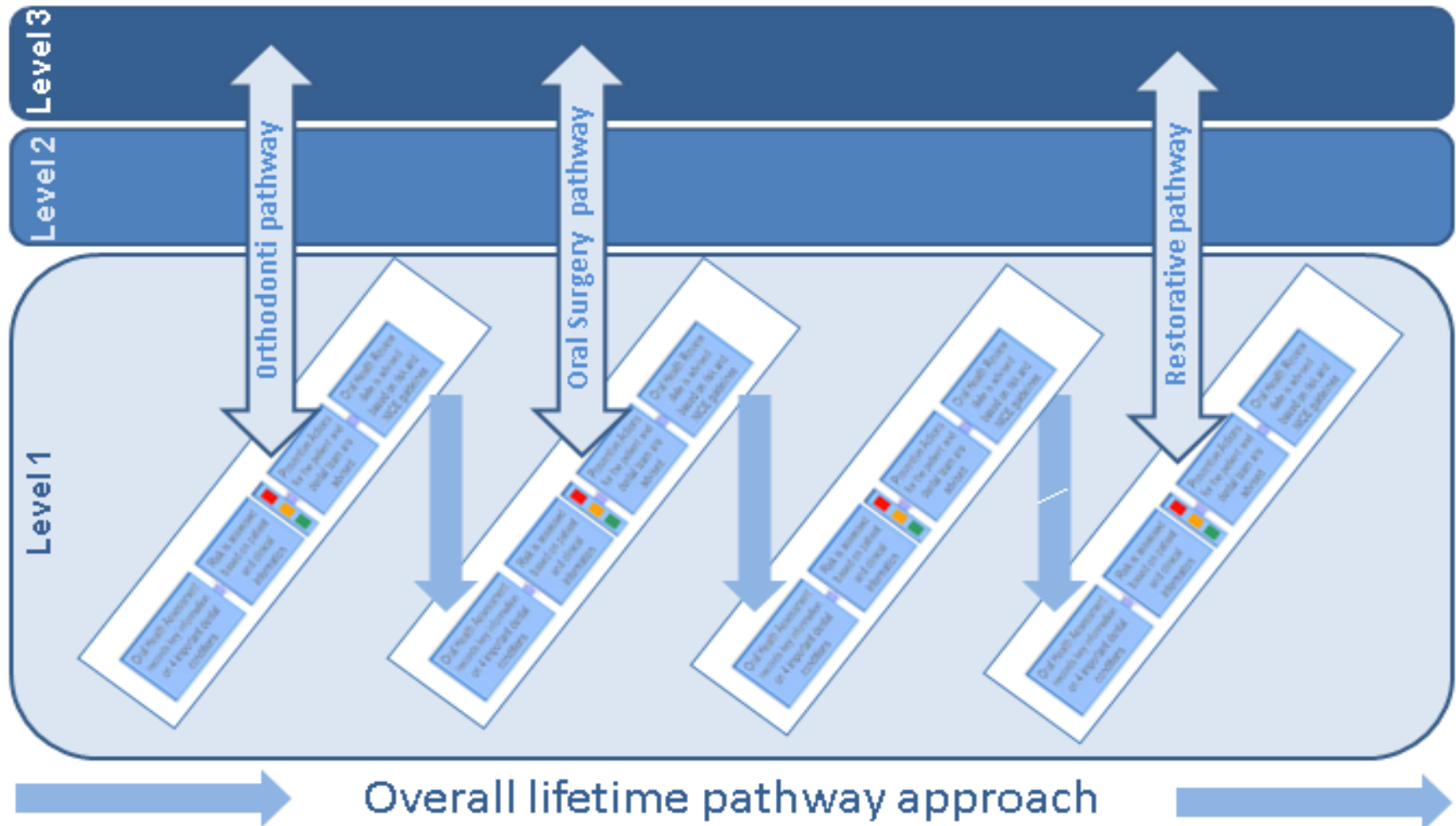
The reformed dental system



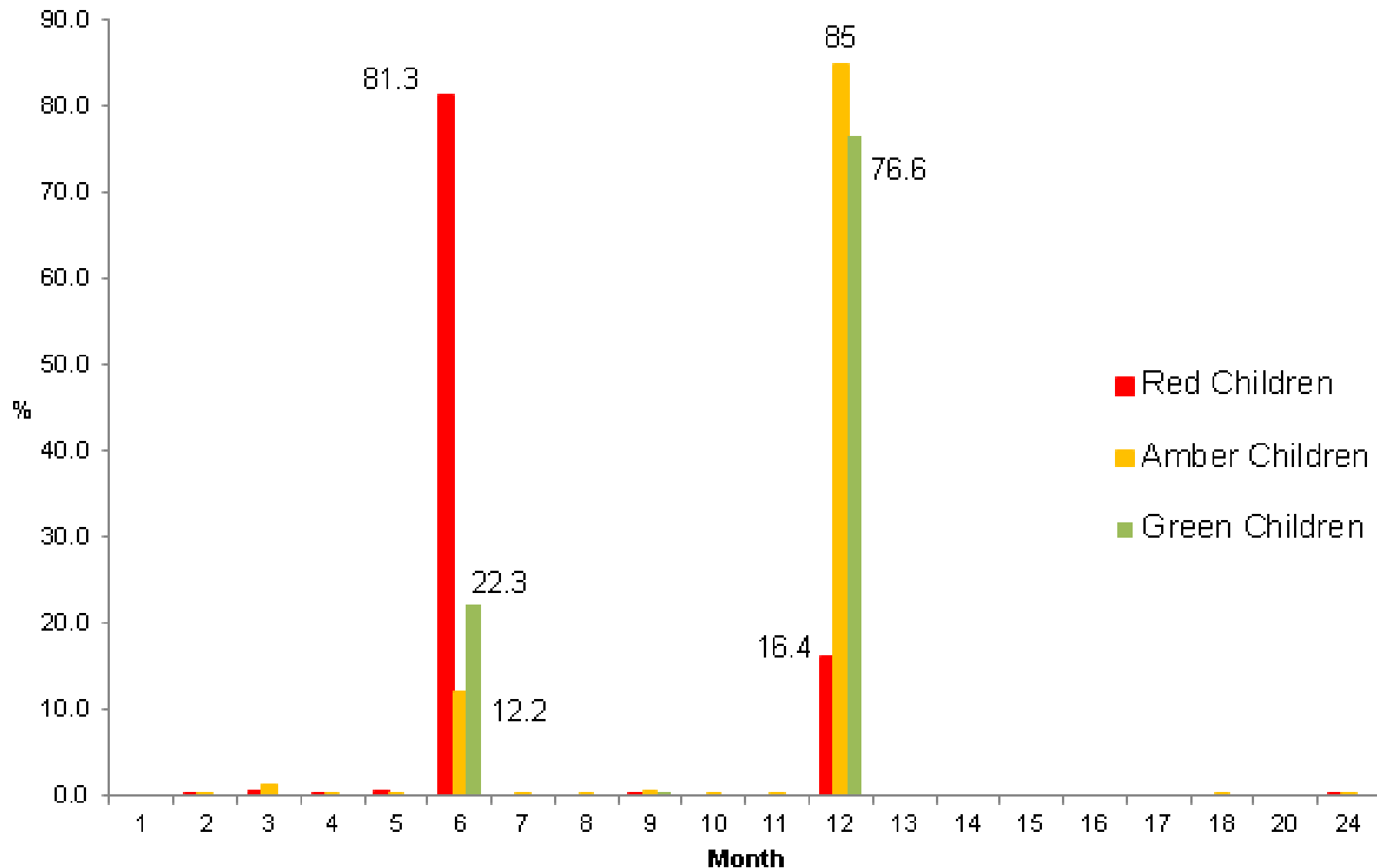
Prevention and Care

The reformed integrated dental system

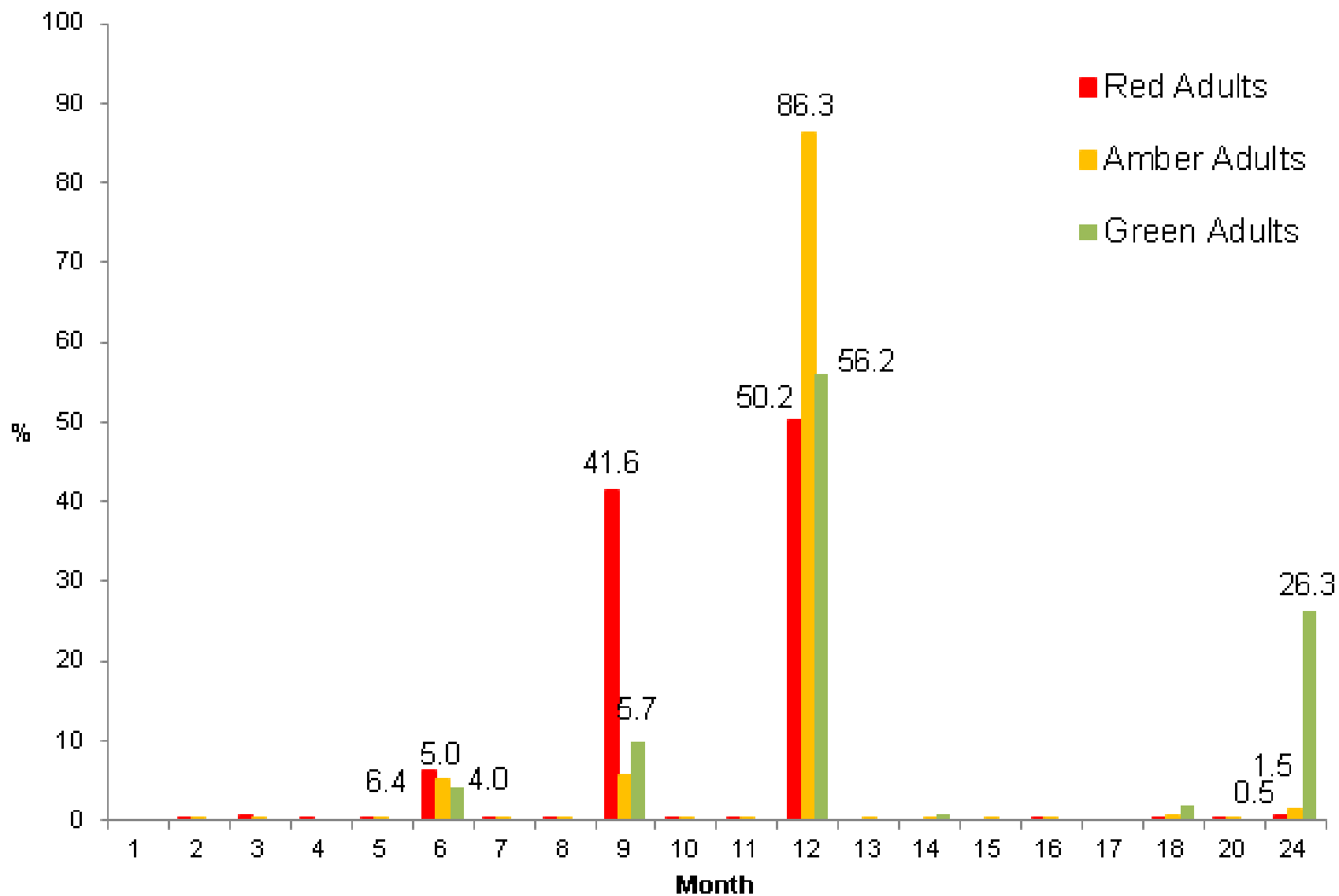
The Patient's journey – an illustration



Clinical pathway - Children planned recall



Clinical pathway - Adult planned recall



FDI Policy Statement – Sustainability in Dentistry



- **Policy**

- Whenever possible, dentistry should reduce the consumption of **energy**, water, paper and any materials which could be harmful to the environment, as well as emissions to air and releases to water.
- Dentists should consider the environment when deciding whether to use a single-use, disposable or reusable product, without compromising patient safety and quality of care, in consultation with regulatory bodies and government health policies.



Online FP17 – April 2019

NHS Dental Services - Completion of form guidance
FP17 - England (April 2018)



Electronic Referral Service eRS

Paper switch off

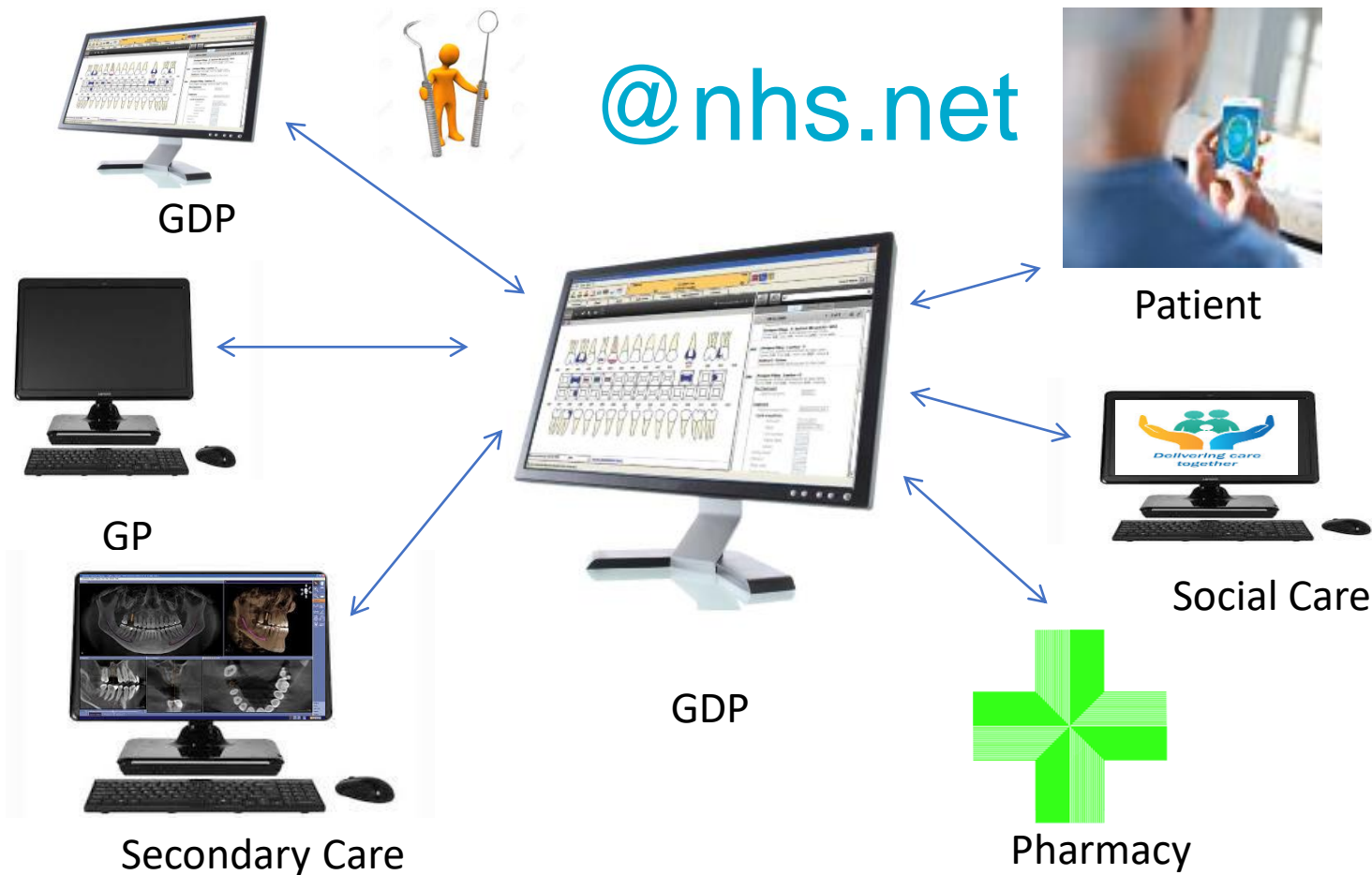


From
1 Oct 2018
trusts will only take
electronic referrals
from GPs.



Paperless electronic dental referral management systems have been commissioned by the NHS and operate in parts of the country

Digital Transformation in dentistry

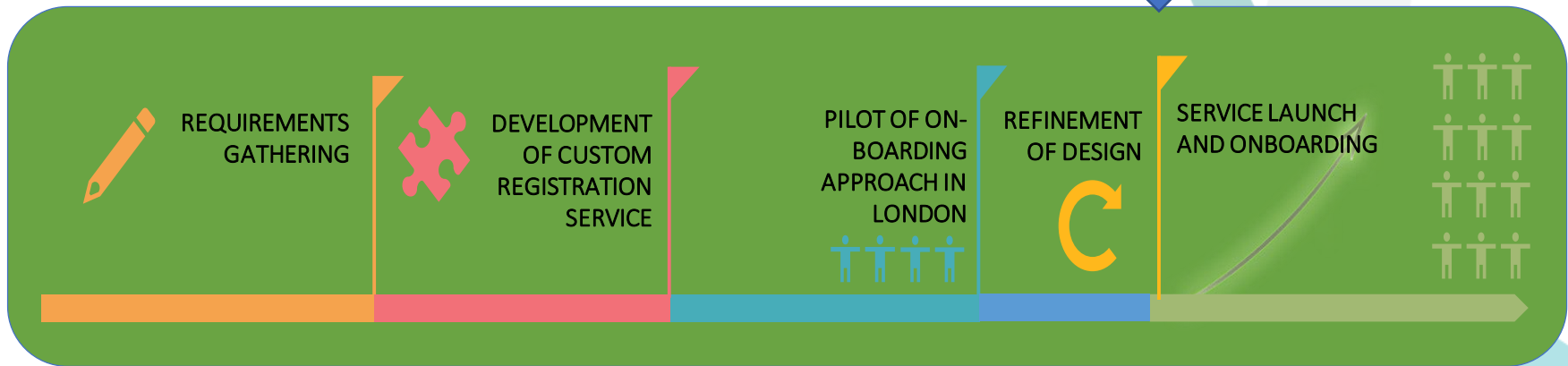


NHSmail rollout

Status



3,200 DENTISTRY PROFESSIONALS LIVE



National Administration Service

A National Administration Service (NAS) has been established dedicated to supporting NHS and Private Dentistry Professionals on-boarding and using the Service

Next Steps

Communications will be issued to all Dental Practices in the coming weeks providing guidance on how to register for the Service. All communications from NHS England will eventually be via NHSmail.

FDI Policy Statement – Sustainability in Dentistry



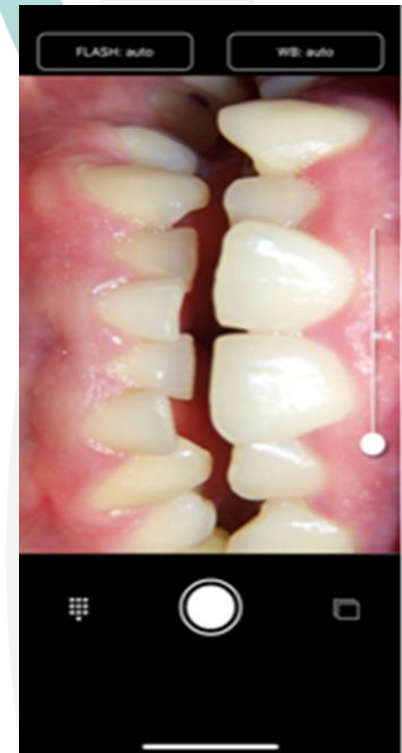
- **Policy**

- Whenever possible, dentistry should reduce the consumption of **energy**, water, paper and any materials which could be harmful to the environment, as well as emissions to air and releases to water.
- Dentists should consider the environment when deciding whether to use a single-use, disposable or reusable product, without compromising patient safety and quality of care, in consultation with regulatory bodies and government health policies.



Meetings and clinical consultations

- Video conferencing – main sites
- More versatile options



- Clinical support and telemedicine

FDI Policy Statement – Sustainability in Dentistry



- **Policy**

- Whenever possible, dentistry should reduce the consumption of energy, water, paper and any **materials** which could be **harmful to the environment**, as well as emissions to **air** and releases to **water**.
- Dentists should consider the environment when deciding whether to use a single-use, disposable or reusable product, without compromising patient safety and quality of care, in consultation with regulatory bodies and government health policies.



Minimata Convention



Implications and Actions for use of dental amalgam

- Pre-dosed encapsulated form
 - Amalgam separators
 - Regulation (EU) 2017/852 of the European Parliament from *1 July 2018*,
 - *dental amalgam ‘shall not be used for dental treatment of deciduous teeth, of children under the age of 15 years and for pregnant or nursing women, except when deemed strictly necessary by the dental practitioner, based on the specific medical needs of the patient’*
 - PHE & DH
 - Legislation & Regulation
 - Public facing messages
 - UK CDO collaboration
-

Amalgam phase down

- SDCEP Advice
- SDCEP leaflets
- Letter from CDO to all GDC registrants
- Letter from NHS England to NHS commissioners

- Contracting discussions through the established channels
- <http://www.sdcep.org.uk/published-guidance/dental-amalgam/>

NHS
Education
for
Scotland

**Restricting the Use of Dental Amalgam
in Specific Patient Groups**
Implementation Advice

This document has been provided to facilitate the implementation of Article 10(2) of Regulation (EU) 2017/852 on Mercury.

SDCEP Scottish Dental
Clinical Effectiveness Programme

June 2018

FDI Policy Statement – Sustainability in Dentistry



- **Policy**

- The dental industry should apply principles of sustainability to **dental product** lifecycles.
- Dental manufacturers should be encouraged to develop more sustainable dental materials and technologies and use **materials that are biodegradable and/or recyclable whenever possible**



TerraCycle® and Colgate® have partnered to create a free recycling program for oral care product packaging as well as a fundraising opportunity for participants.

**ACCEPTED
WASTE**

1 Toothpaste tubes and caps

3 Toothpaste cartons and toothbrush outer packaging



4 Floss containers

2 Toothbrushes

Sustainable dentistry – innovation and future proofing

FDI Policy Statement – Sustainability in Dentistry



- **Policy**
- National authorities should stimulate research on improvement and assessment of sustainability and on the environmental impact of dental practice so that oral health professionals can understand, monitor and report the impact of their actions.
- The use of low-power and low-pollution technologies should be promoted.
- NDAs and other related dental organizations (e.g. FDI regional organizations and NDA branches) should ensure their activities and operations are based on principles of sustainability. They are encouraged to formulate best practice documents for their dentists



FDI Policy Statement – Sustainability in Dentistry



- **Policy**
- FDI and NDAs should be encouraged to integrate the concept of sustainable development into their continuing education activities.



e-Den – online CPD

NHS
Health Education England

e-LFH



NHS
Health Education England

[Home](#)

Panel View

[Full catalogue](#)

[Full catalogue](#) > [Dentistry \(e-Den\)](#)

Full catalogue

[Preview] - Multiprofessional Supervisor e-Learning build 1 (MSE)

Accessible Information Standard (AIS)

Acute Medicine (ACUMEN)

Acute NIV (NIV)

Adolescent Health Programme (AHP)

Advanced Course in Skin Cancer (e-LPRAS)

Advanced Radiotherapy (ART)

Ages and Stages Questionnaires (ASQ)

Alcohol - Reducing Violence in the Community (RVC)

Alcohol and Tobacco Brief Interventions

Alcohol Identification and Brief Advice (ALC)

Alcohol Stigma: Stories Behind the Bottle (SBB)

[e-Den Module 1 - Patient Assessment](#)

[e-Den Module 2 - Human Diseases and Medical and Dental Emergencies](#)

[e-Den Module 3 - Anxiety and Pain Control in Dentistry](#)

[e-Den Module 4 - Periodontal Disease and Management](#)

[e-Den Module 5 - Hard and Soft Tissue Surgery](#)

[e-Den Module 6 - Surgical and Non-Surgical Management of Head and Neck Disease](#)

[e-Den Module 7 - Management of the Developing Dentition](#)

[e-Den Module 8 - Restoration of Teeth](#)

[e-Den Module 9 - Replacement of Teeth](#)

e-Den – online CPD

NHS
Health Education England

e-LFH



NHS
Health Education England

Home

Panel View

Full catalogue

Full catalogue > Dentistry (e-Den)

Full catalogue

[Preview] - Multiprofessional Supervisor e-Learning build 1 (MSE)

Accessible Information Standard (AIS)

Acute M

Acute N

Adolesc

Advanc
LPRAS)

Advanc

Ages an

Alcohol - Reducing Violence in the Community (RVC)

Alcohol and Tobacco Brief Interventions

Alcohol Identification and Brief Advice (ALC)

Alcohol Stigma: Stories Behind the Bottle (SBB)

e-Den Module 1 - Patient Assessment

e-Den Module 2 - Human Diseases and Medical and Dental Emergencies



e-Den Module 13 - Sustainable Dentistry

Neck Disease

e-Den Module 7 - Management of the Developing Dentition

e-Den Module 8 - Restoration of Teeth

e-Den Module 9 - Replacement of Teeth

Aims

- To set out the overall approach to sustainability
- To look at the innovations and current developments through a sustainability lens

OCDO

OFFICE OF CHIEF
DENTAL OFFICER
ENGLAND



Thank you

ericrooney@nhs.net