

Joint Commissioning Panel
for Mental Health

www.jcpmh.info

Centre for Sustainable Healthcare

www.sustainablehealthcare.org.uk

Guidance for commissioners of
financially, environmentally,
and socially sustainable
mental health services
(future proofing services)

Daniel Maughan

Royal College of Psychiatrists Sustainability Fellow
[#futureproofmentalhealth](https://twitter.com/futureproofmentalhealth)

Current context

Health care is talked about in these terms:

- Individuals
- Illness
- Interventions
- Cost-effectiveness

**BLINKERED
APPROACH**

Health is a state of complete physical, mental and social well-being and not merely the absence of disease or infirmity.

What is mental health?

Genetics, neurotransmitters, receptors.....

What we do

How we live

How we think

What we receive

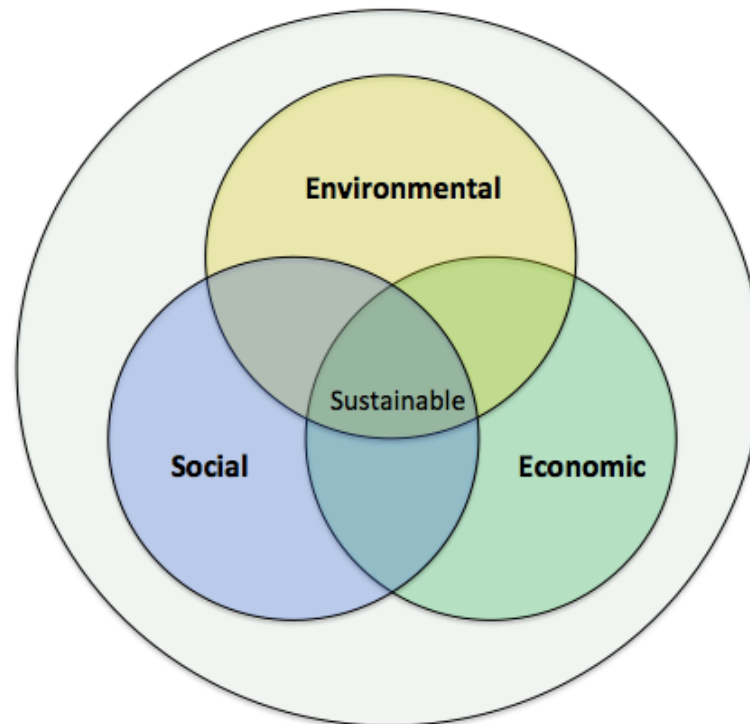
Who we see

What we give

Engaging with the future

We need to start using these terms

- Health
- Resilience
- Community structures
- Society
- Natural environment



Economic sustainability

- Providing the most cost-effective improvement to the mental health of the whole community
- The impact that mental health services have on the economy



Social Sustainability

*Restoring the social capital in the community
that is lost because of mental illness*

Social capital (located in the community):

- housing
- employment & educational opportunities
- community connectedness

Social Sustainability

~~BIOPSYCHOSOCIAL~~



Back to School



Recovery:

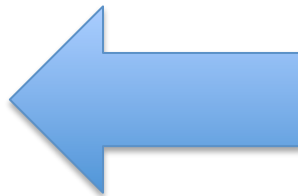
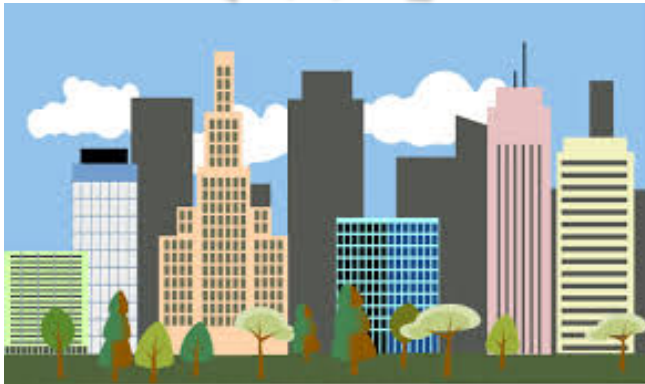
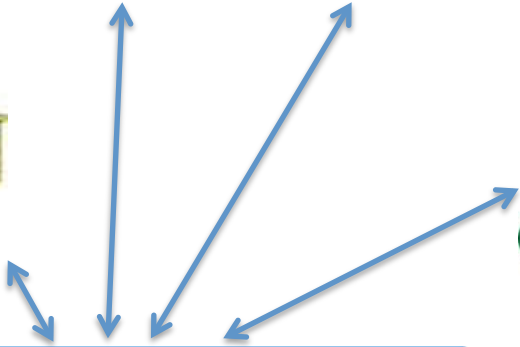
Hope



Agency



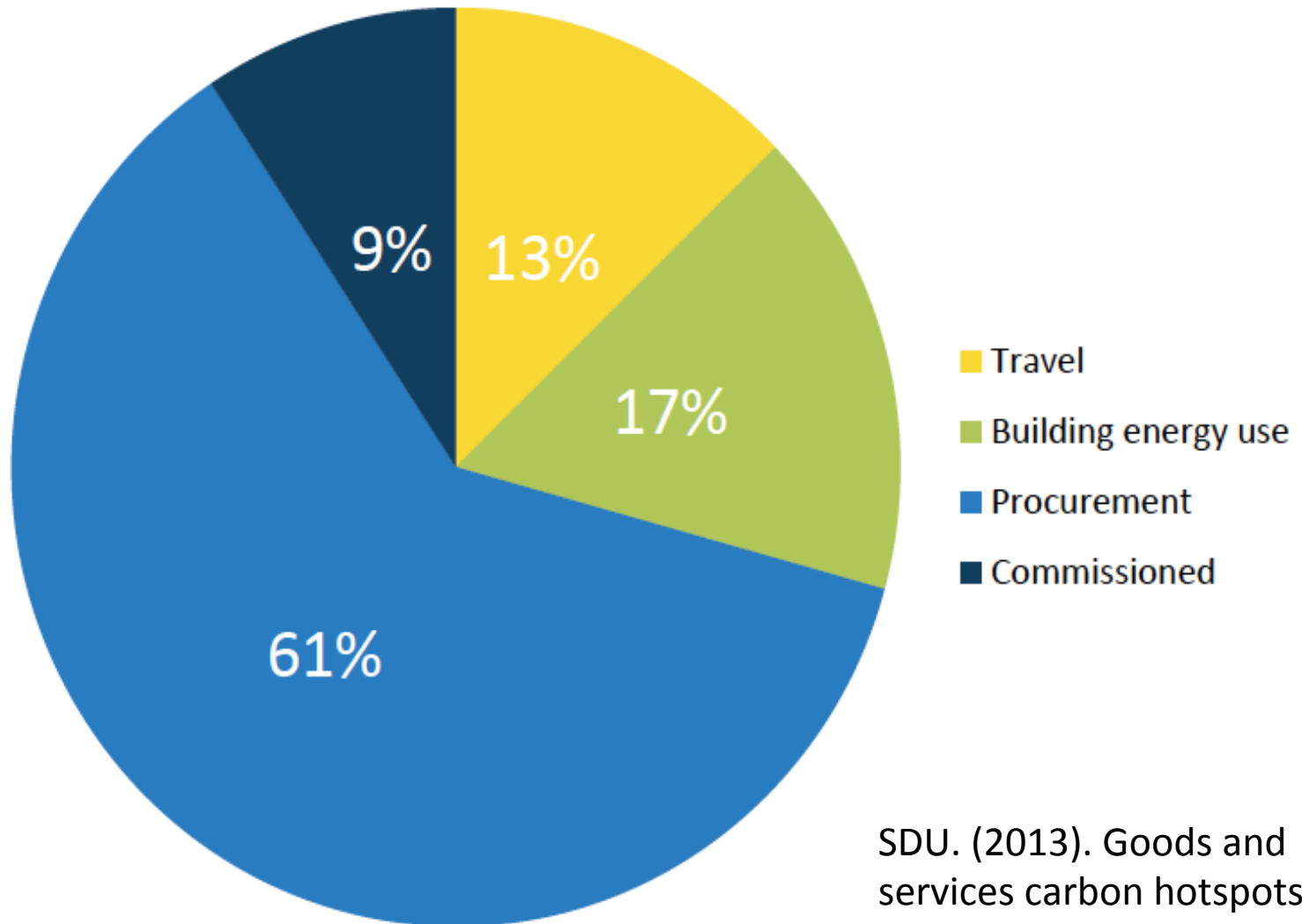
Opportunity

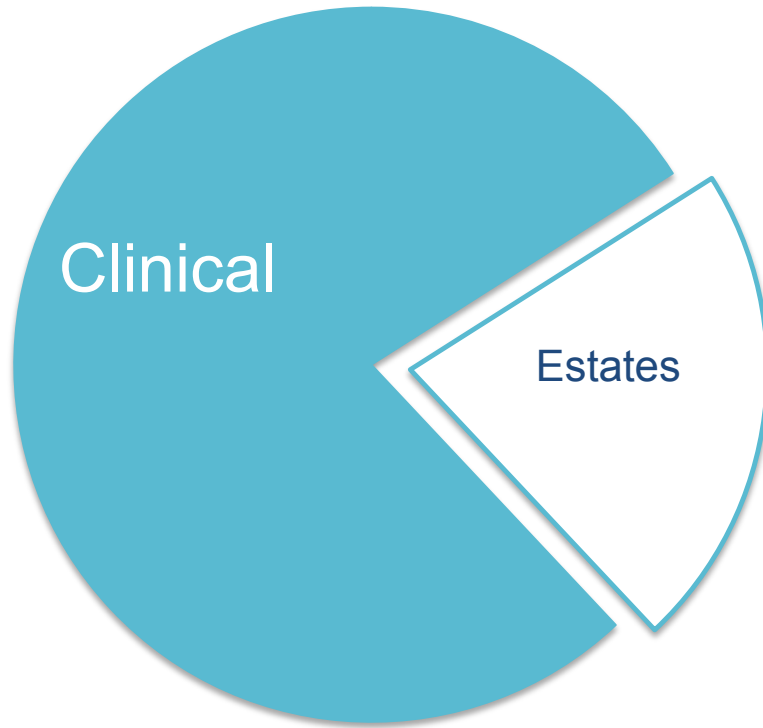


Environmental sustainability

- What is the MORAL imperative?
- The WHO and the Lancet Commission both state that climate change is the largest threat to human health in the 21st Century
- Evidence that floods, heat waves, drought and cyclones all impact on mental health
- The contribution from health care is significant

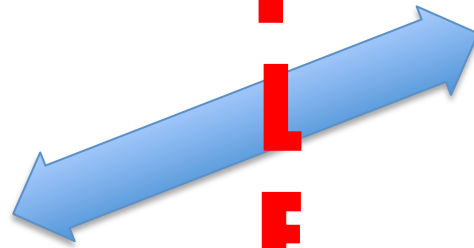
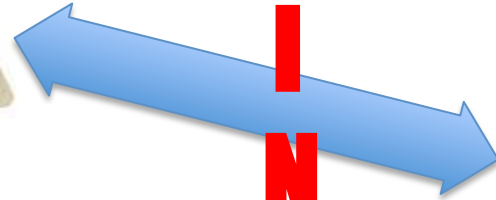
NHS carbon footprint breakdown 2012





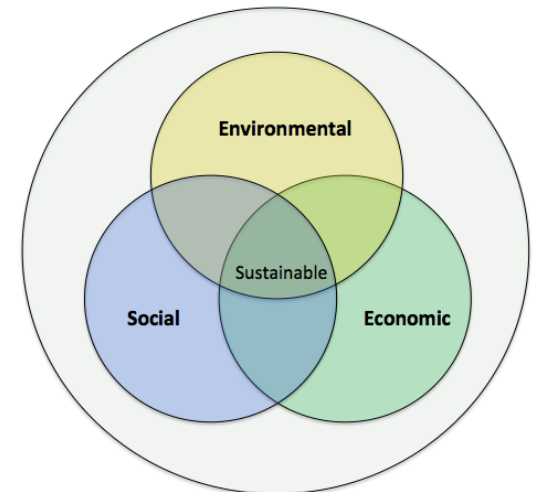


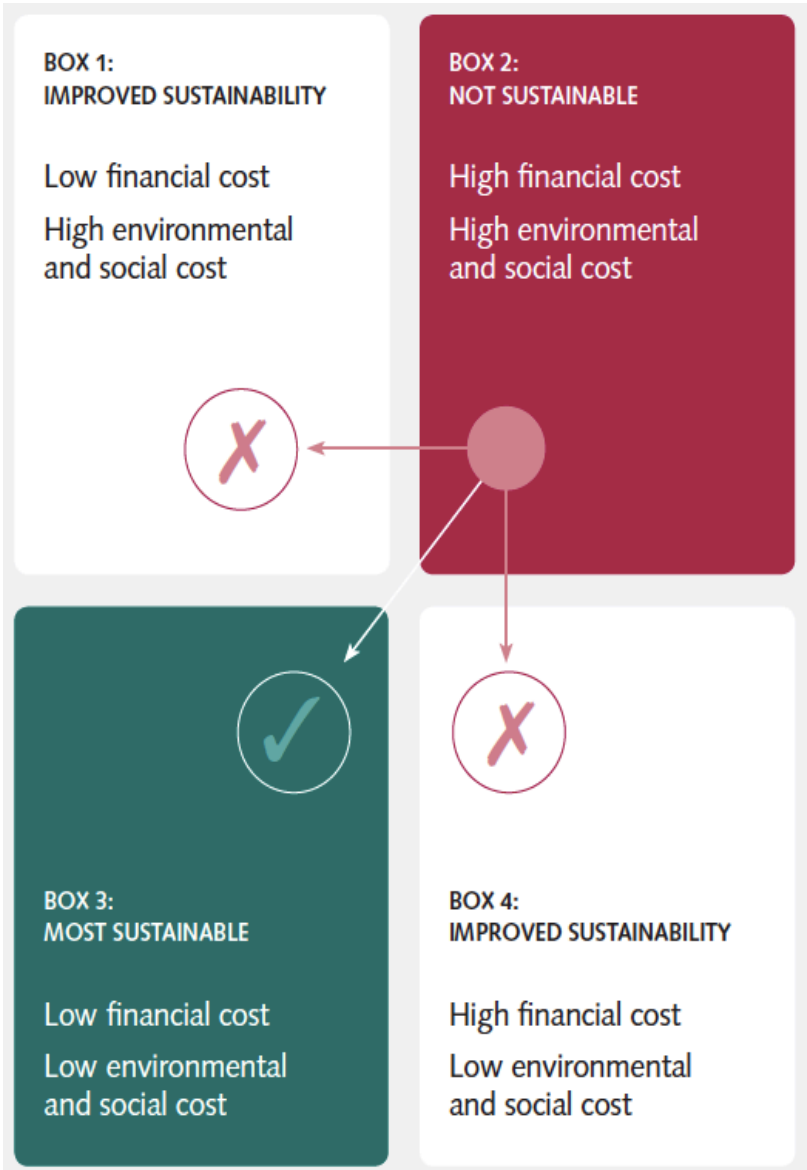
**P
R
I
N
C
I
P
L
E
S**



- Prevent
- Empower
- Improve value
- Consider carbon

MODELS OF CARE

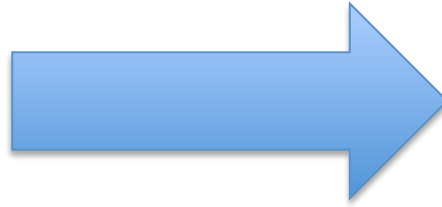




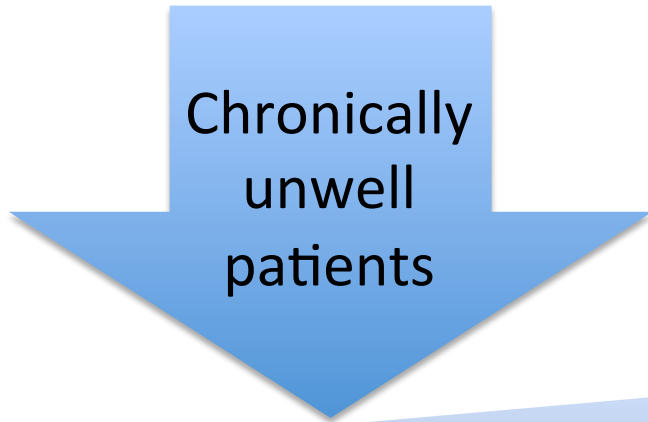
Value = $\frac{\text{Patient outcomes}}{\text{Costs}}$

Economic
Environmental
Social

**INDIVIDUAL
ILLNESS
INTERVENTION**



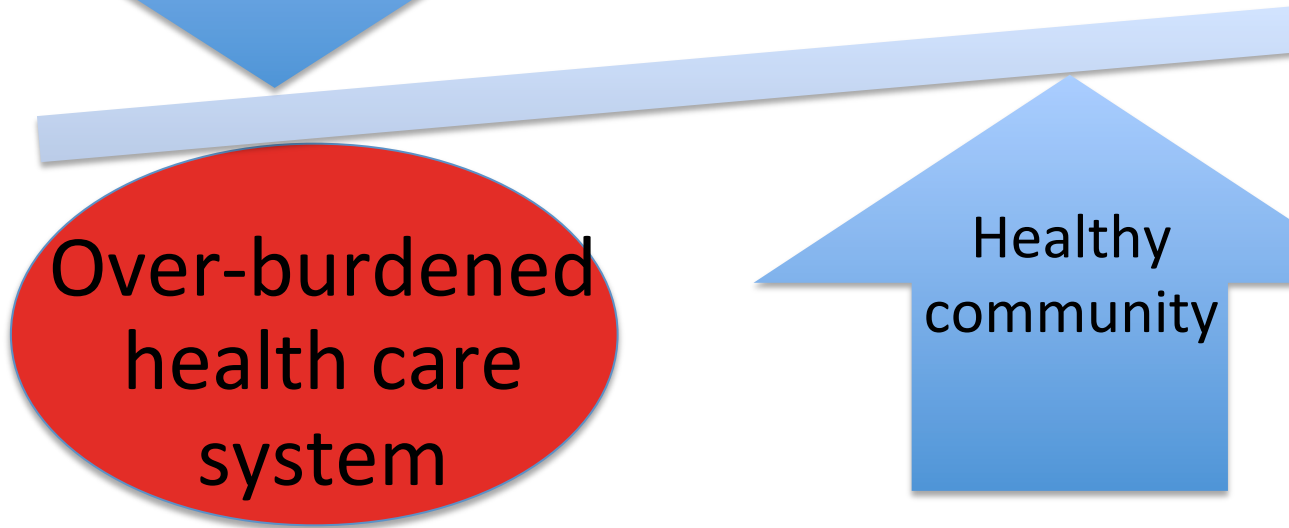
**COMMUNITY
HEALTH
RESILIENCE**



Chronically
unwell
patients



Sustainable
health care
system



Over-burdened
health care
system

Healthy
community

面向农村 为五亿农民服务

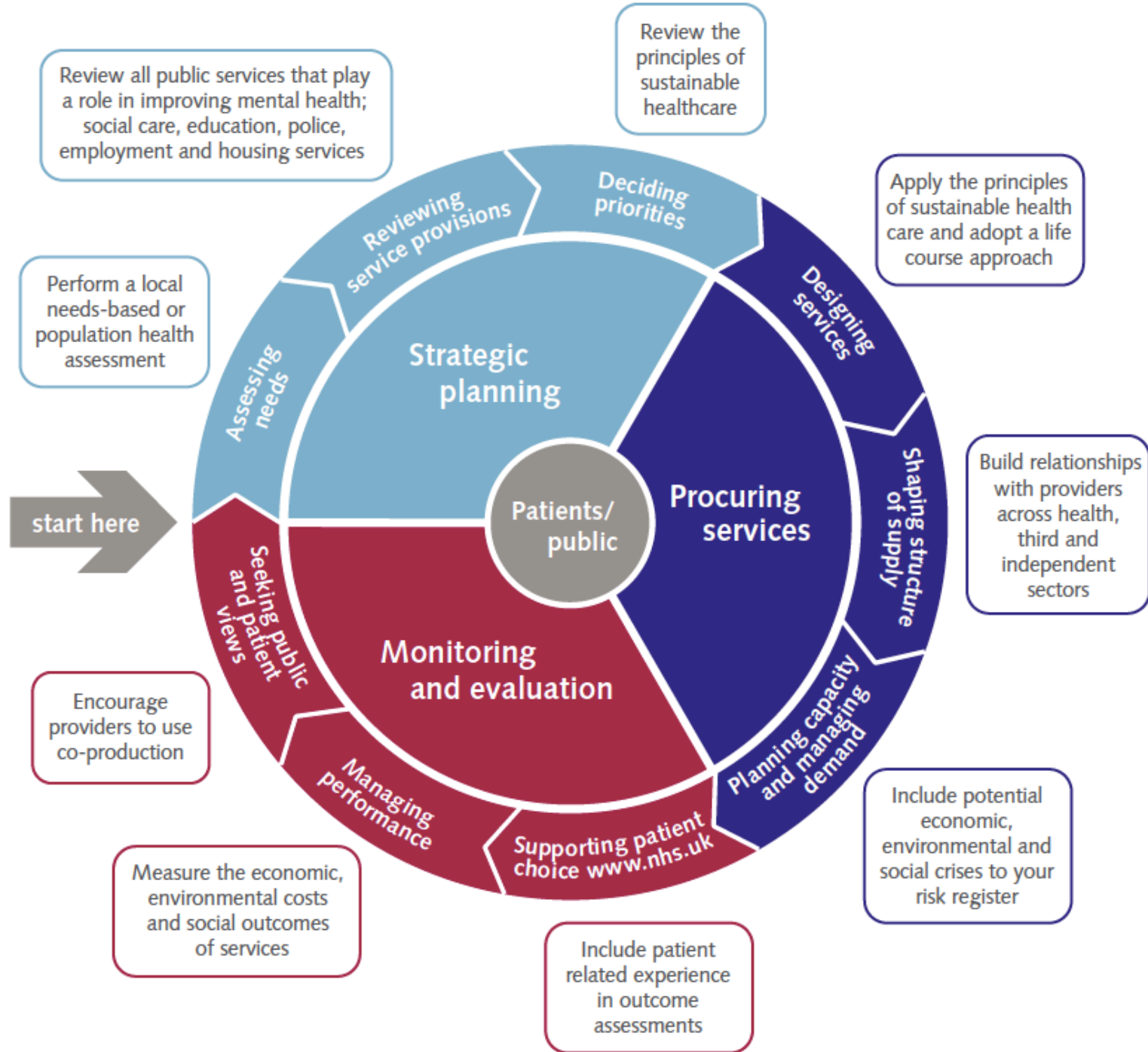


面向农村
为五亿农民服务

The Guide is Practical

It provides....

- Ten practical actions for commissioners to take to improve sustainability
- Key questions that commissioners can ask their commissioning group and service providers
- An example of a sustainable CQUIN from City and Hackney CCG
- Other examples of sustainable quality targets



A Life Course Approach



Pregnancy

- Perinatal services

Child and adolescent services

- Parental training
- Mental health promotion in schools
- Early intervention services

Adult services

- Peer support services
- Online self-care resources
- Vocational skills and employment opportunities
- Physical health prevention and promotion
- Improving inpatient care
- Therapeutic communities
- Recovery colleges
- Social prescribing services
- Reducing non-attendance
- Ecotherapy
- Reduce medications wastage
- Liaison psychiatry in primary care

Older adult services

- Liaison psychiatry in hospitals
- Integrate older adult services
- Improve social networks



Legal requirements

- The 2012 Public Services or Social Value Act

All commissioners of public services are required to consider economic, social and environmental value, not just price, when procuring services.

- The 2004 Civil Contingencies Act

Organisations within the NHS are required to prepare for adverse events such as those associated with financial crises and climate change

- The Climate Change Act

Mandates an 80% reduction in the carbon footprint by 2050.

RCPsych Sustainability Scholars

Suhana Ahmed
Oliver Bashford
Mike Pearce



for
**SUSTAINABLE
HEALTHCARE**

Thank you