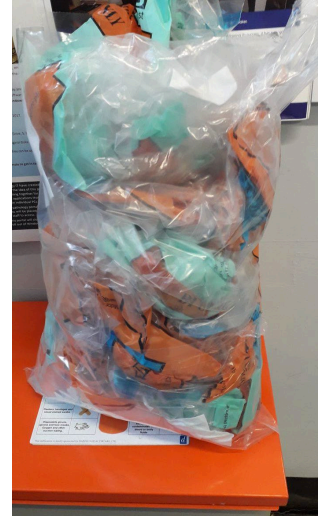


Multi Use racks and transport cases



Waste from a morning's GP collections



The examples above are multi-use rack and transport systems.

- Pros
 - Achieves a substantive reduction in single-use plastics
 - The red Box system holds 40 tubes and takes around 4m:30s to accession all tubes
 - The green rack system is an automated system that auto – accessions tubes
 - More cost-effective over time than single-use plastics
- Cons
 - The Green rack system is designed for blood tubes, so it can't transport universal urines, histo and cyto pots, FIT and Swabs.
 - The Red Box system has inner solutions that support multiple tube/container types, including swabs.

The two images above are typical of a morning's waste generated from a GP and community collection from multiple routes.